



# MIRUS ELITE G2



## MIRUS ELITE G2 OVERVIEW

The second generation Mirus Elite G2 office chair includes new features, enhancing its functionality, outstanding movement, and ergonomic support.

With exceptional back support, the next generation Mirus chair has been developed to fit and support the body and spine, allowing the user to stay comfortable for long periods. Upper and lower back regions are fully supported by our most advanced lumbar system, encouraging healthy posture.

The ingeniously simple single lever control continues to operate the three most frequently used chair functions (seat height, seat slide and back tilt) and a lever on the left side controls the new synchro forward seat tilt feature.

The Mirus boasts 97% recyclability, has Greenguard Gold Certification and meets BS 5459-2:2000 and -A2:2008. Available in a choice of mesh finishes and in a black or grey frame with polished aluminium detailing and base.





## MIRUS ELITE G2 FEATURES

### FEATURES

- Synchro mechanism
- Right single lever for:
  - seat height
  - seat slide (50 mm)
  - lockable back tilt
- Left lever for forward seat tilt
- Recline tension control
- Integrated lumbar support with tension control
- Waterfall front seat
- 5D adjustable armrests:
  - height, width, depth, angle and armpad tilt
- Polished aluminium base with 65 mm dual castors

### OPTIONS

- Black or grey frame
- Adjustable 3D headrest
- Fold-out footrest
- Pop-up coat hanger



# MIRUS ELITE G2 CREDENTIALS

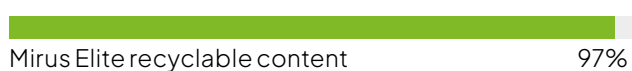
## CERTIFICATION

- BS 5459-2:2000
- BS 5459-A2:2008
- EN1335-1:2020
- EN1335-2:2018
- ANSI/BIFMA X5.1-2017
- GREENGUARD GOLD

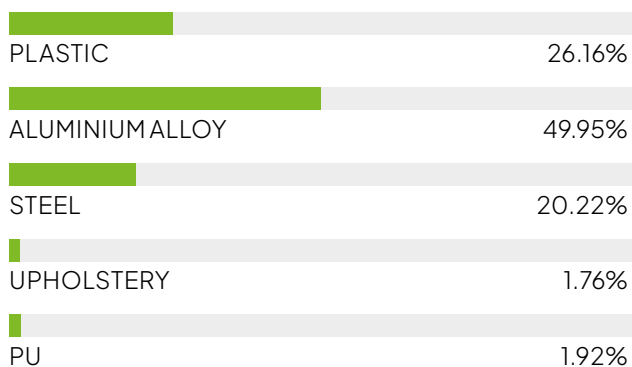
Greenguard Certification Standards have established performance-based standards to define products and processes with low chemical and particle emissions for use indoors.



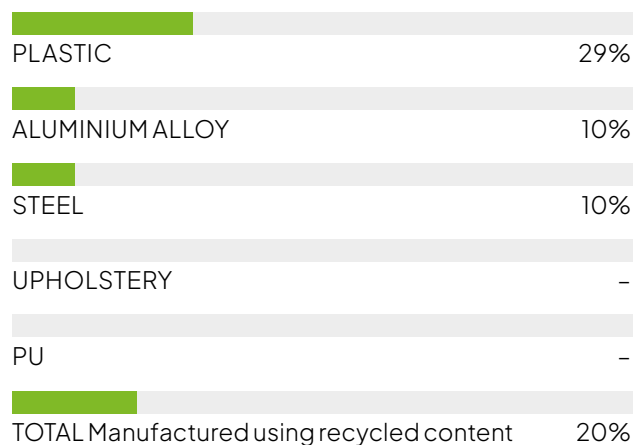
## RECYCLABILITY



## MATERIAL ANALYSIS



## RECYCLED CONTENT



# MIRUS ELITE G2 DIMENSIONS



## DIMENSIONS (mm)

Overall height: 1160-1370

Overall depth: 675

Overall width: 670-700

Base diameter: 675

Seat height: 500-600 (range 100)

Seat depth: 490 (range +50)

Seat width: 530

Back width: 530

Backrest height: 580

Seat to top of back: 610-650 (range 40)

Arm height from seat: 170-270 (range 100)

Armrest width range: 15 + 15

Armrest depth: 285 (range +40)

Armrest angle: 60° in / 10° out

Armpad tilt: 42°

## OPTIONAL:

Headrest stem height: range 60

Headrest angle: range 35°

Legrest extension: 400

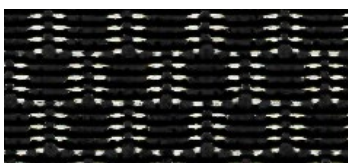
## WEIGHT LOADING

Warrantied for use by persons up to 150 kg.

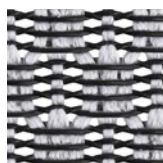


## MIRUS ELITE G2 TEXTILES

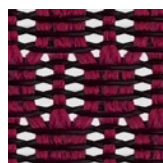
### T MESH



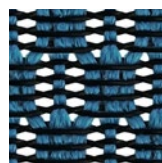
BLACK (STANDARD)  
T-168-B1



LIGHT GREY  
T-168-B2



SCARLET  
T-168-B3



COBALT  
T-168-B4

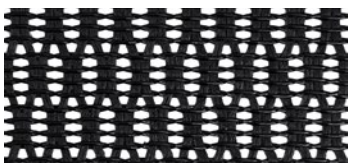


PINK  
T-168-B5

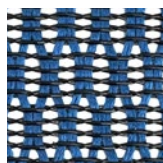


GREEN  
T-168-B6

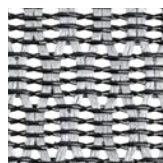
### W MESH



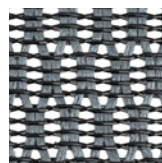
BLACK  
W09-01



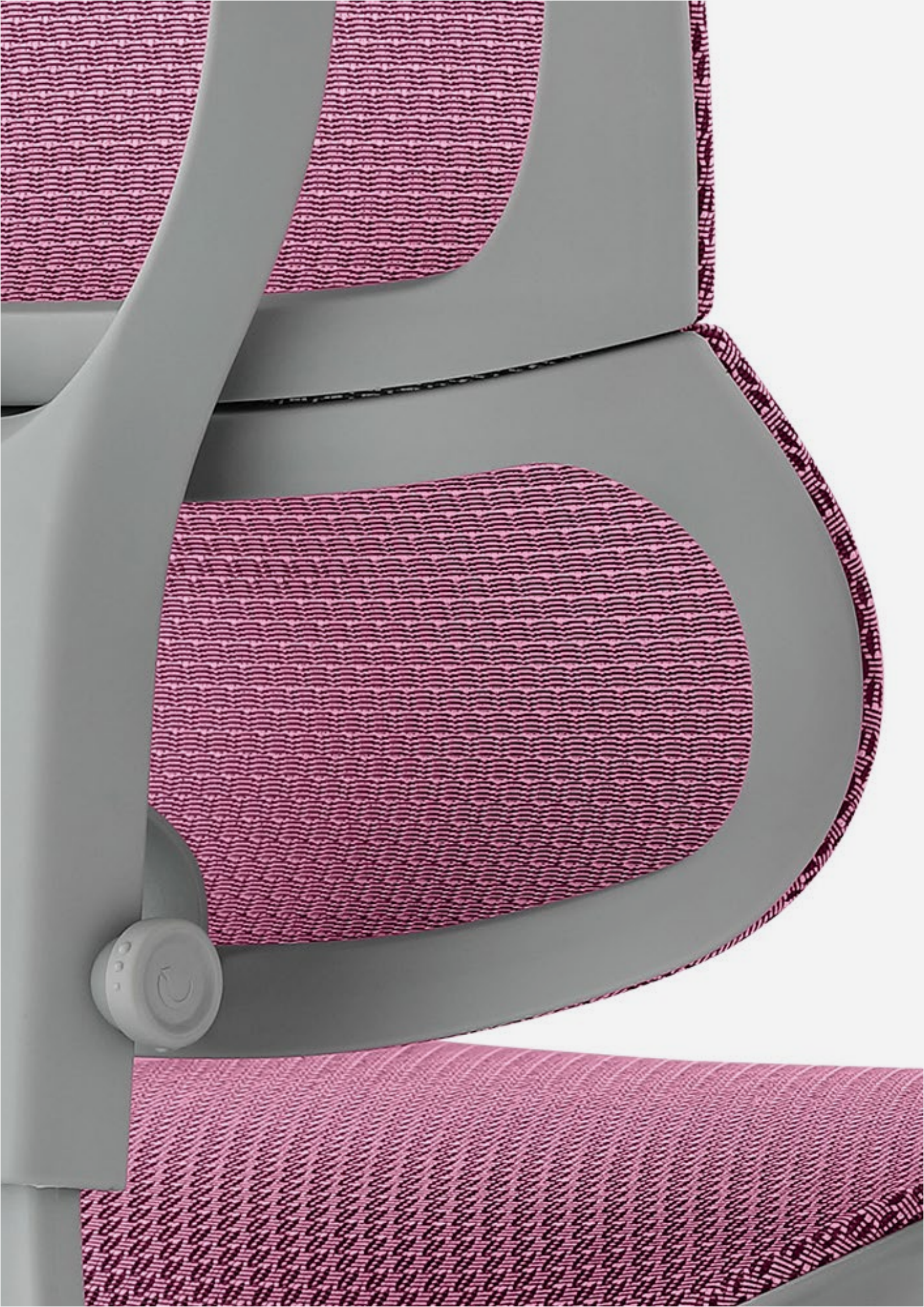
BLUE  
W09-18



WHITE  
W09-24



GREY  
W09-53





The logo for COMFORTUK features the word 'COMFORTUK' in a bold, black, sans-serif font. The letter 'O' is replaced by a circular graphic composed of several overlapping, semi-transparent colored segments in shades of red, orange, yellow, green, and blue. The background of the entire page is a white space with large, abstract, curved shapes in teal, orange, yellow, red, and blue.

**COMFORTUK HQ**  
Riverbank Mill  
2 Stoneygate Road  
Newmilns, Ayrshire  
United Kingdom, KA16 9AJ

T +44 (0)1560 324 446  
E [hello@comfort.global](mailto:hello@comfort.global)

**BUY AT: [WWW.ERGOHUMAN.STORE](http://WWW.ERGOHUMAN.STORE)**